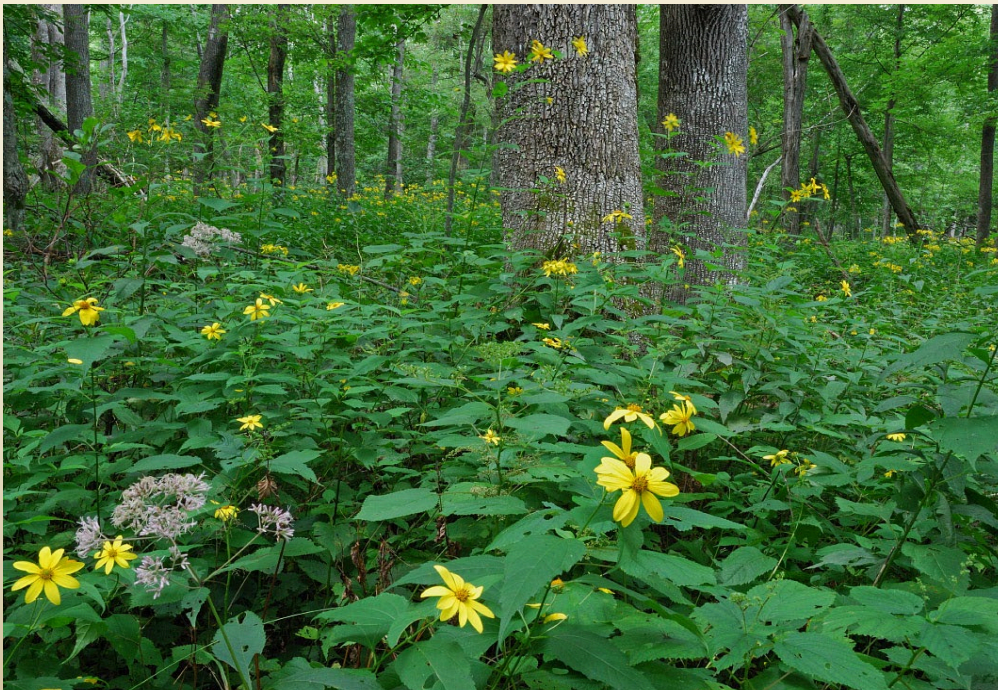


Virginia Department of Conservation and Recreation Division of Natural Heritage



VLCF Eligibility Requirements (Natural Area category)

Each project must:

(1) qualify for “dedication” (natural heritage resource must be present) ^a

(1) contribute significantly to natural heritage resource protection

(2) include sufficient evaluation by DCR-DNH staff (including site visit)

(3) be supported by receptive landowners ^a

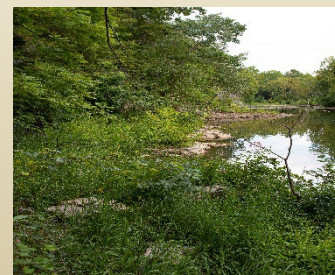
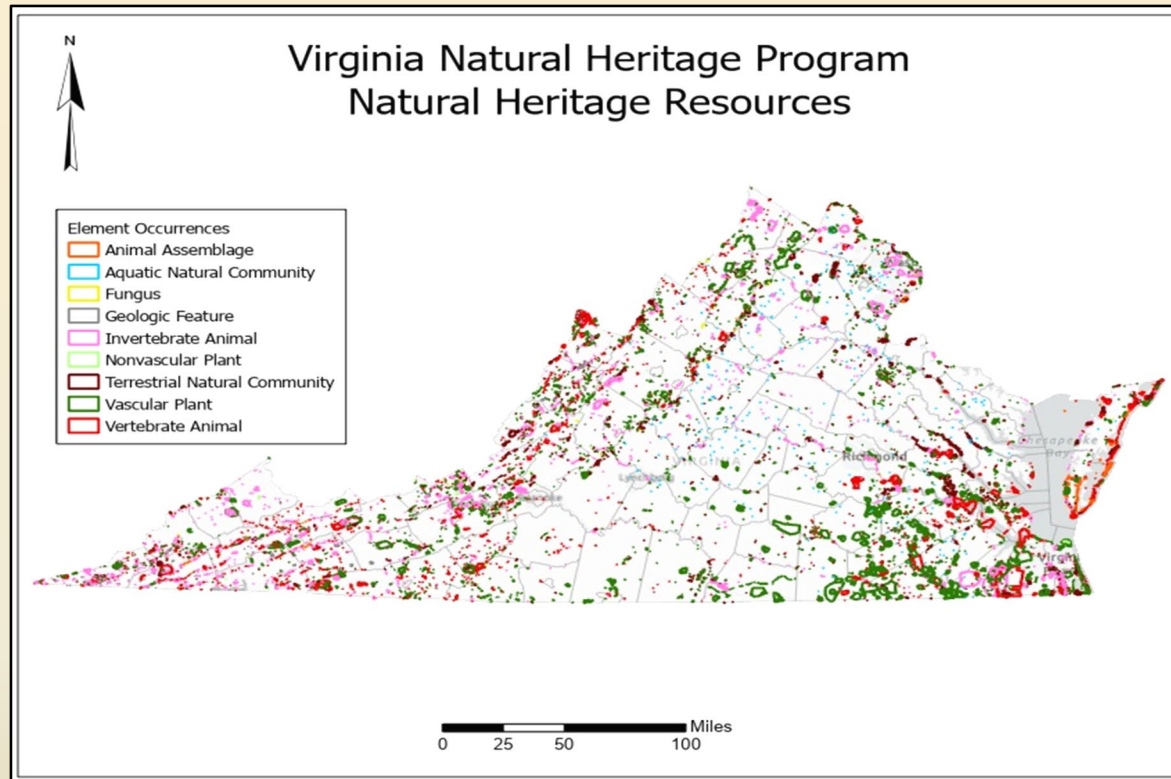
(4) (5) include a recommendation from DCR Natural Heritage ^c

^a per Va. Code § 10.1- 213

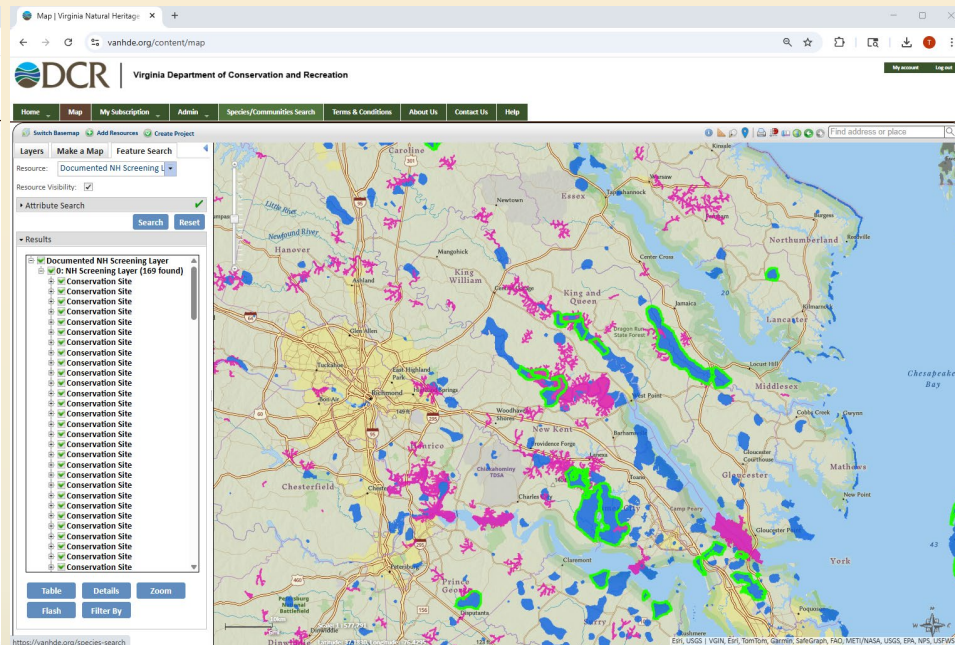
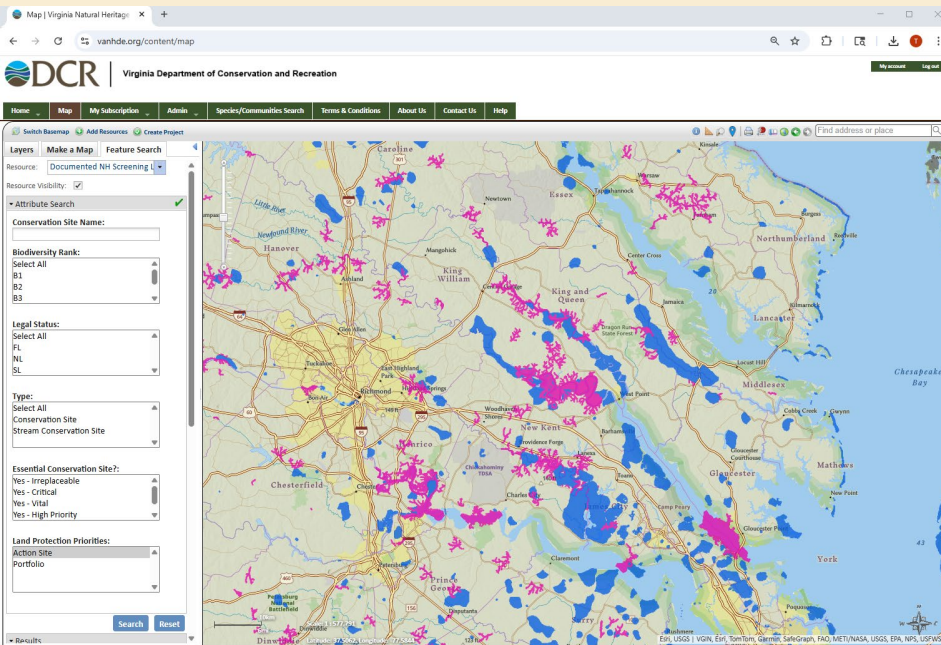
clear commitment to dedication process & long-term mgt/resulting from direct communication with appropriate DCR staff

^b

Minimum qualification = Presence of Natural Heritage Resources



Significance of Contribution to Natural Heritage Resource Protection

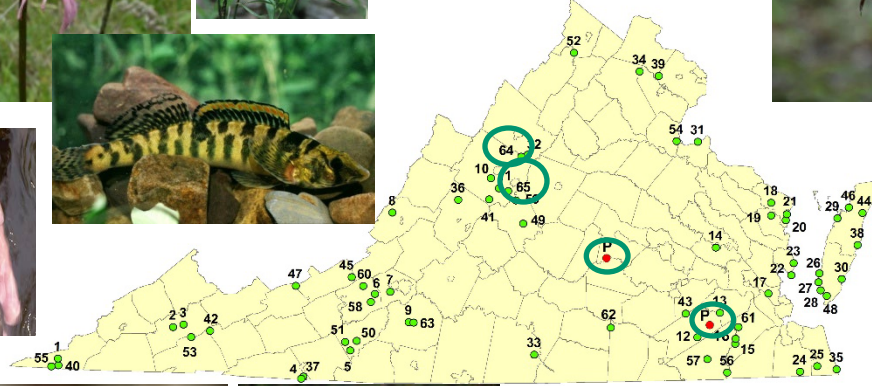
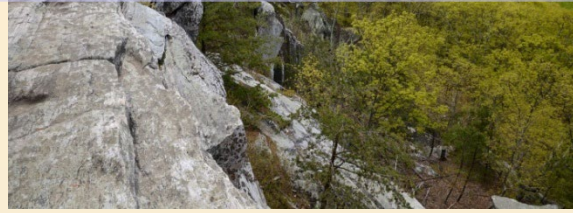
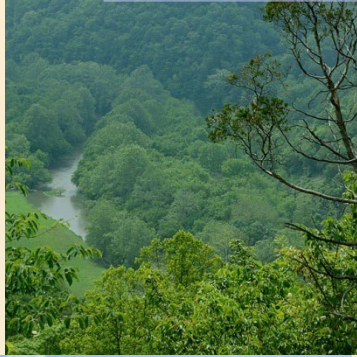


Natural Heritage Program task assigned Natural Area Preserve Act (1989)

- review NHDE (as shown above)
- reach out to DCR-DNH Protection (Rob Evans)

Significance of contribution part 2:

How does project complement existing Natural Area Preserve System



Site visit & Landowner Contact

NHP staff MUST have timely opportunity to visit the tract:

- Determine/confirm presence and quality of resources,
- Evaluate mgt needs & assess threats
- Discuss conservation measures required & implications of natural area dedication with landowner



Landowner willingness & receptivity to Deed of Dedication

Each applicant must:

agree to include dedication of all property as a natural area preserve...” (see Va. Code § 10.1- 1022.1 D)

- Perpetuity
- No impairment, disturbance, use, or development of the area inconsistent with resource protection & management;
- Incompatible uses prohibited (see Natural Area Preserve Management Guidelines Technical Report #10-19, 2010)
- Compatible uses allowed (see Natural Area Preserve Management Guidelines)
- Signed management plan required (before dedication & funds transfer)

Landowner's Management Capability & Commitment

demonstrate commitment to active and ongoing management activities to maintain natural heritage resources on the property



DCR recommendation is essential !

Site visit results

Significance of conservation values

(measured by contribution to the protection of natural heritage resources);

Ecological integrity (size and viability of heritage resource within project area); and

Applicant willingness & capability to protect the site from short-term and long-term stresses

VLCF Scoring Criteria

Biodiversity Significance

(35 pts)

Quality, quantity, and significance of natural heritage resources present? (see ECS)

Ecological Integrity

(20 pts)

Regional Landscape & parcel integrity, connectivity (see ecological cores)

Mgt Needs/Likelihood of Success

(25 pts)

Management needs & applicant capacity, DNH site visit/owner discussions, development threats

ConserveVirginia

(20 pts)

% of the project is included in “Natural Habitat and Biological Diversity Category”

Natural Heritage Data Explorer (NHDE)



[Login/Register](#)

Virginia Department of Conservation & Recreation

[Home](#) [Map](#) [About Us](#) [Contact Us](#) [Help](#) [Species/Community Search](#) [Terms and Conditions](#)

[Switch Basemap](#) [Add Resource](#)

Layers [Map Making](#) [Find/Results](#)

▼ Managed Conservation Lands

☒ **Managed Conservation Lands**

▼ Conservation Planning

- ☐ Agricultural Model
- ☐ Cultural Asset Model
- ☐ Ecological Cores
- ☐ Forest Economics Model
- ☐ Recreational Assets Model
- ☐ Vulnerability Model
- ☐ Watershed Integrity Model

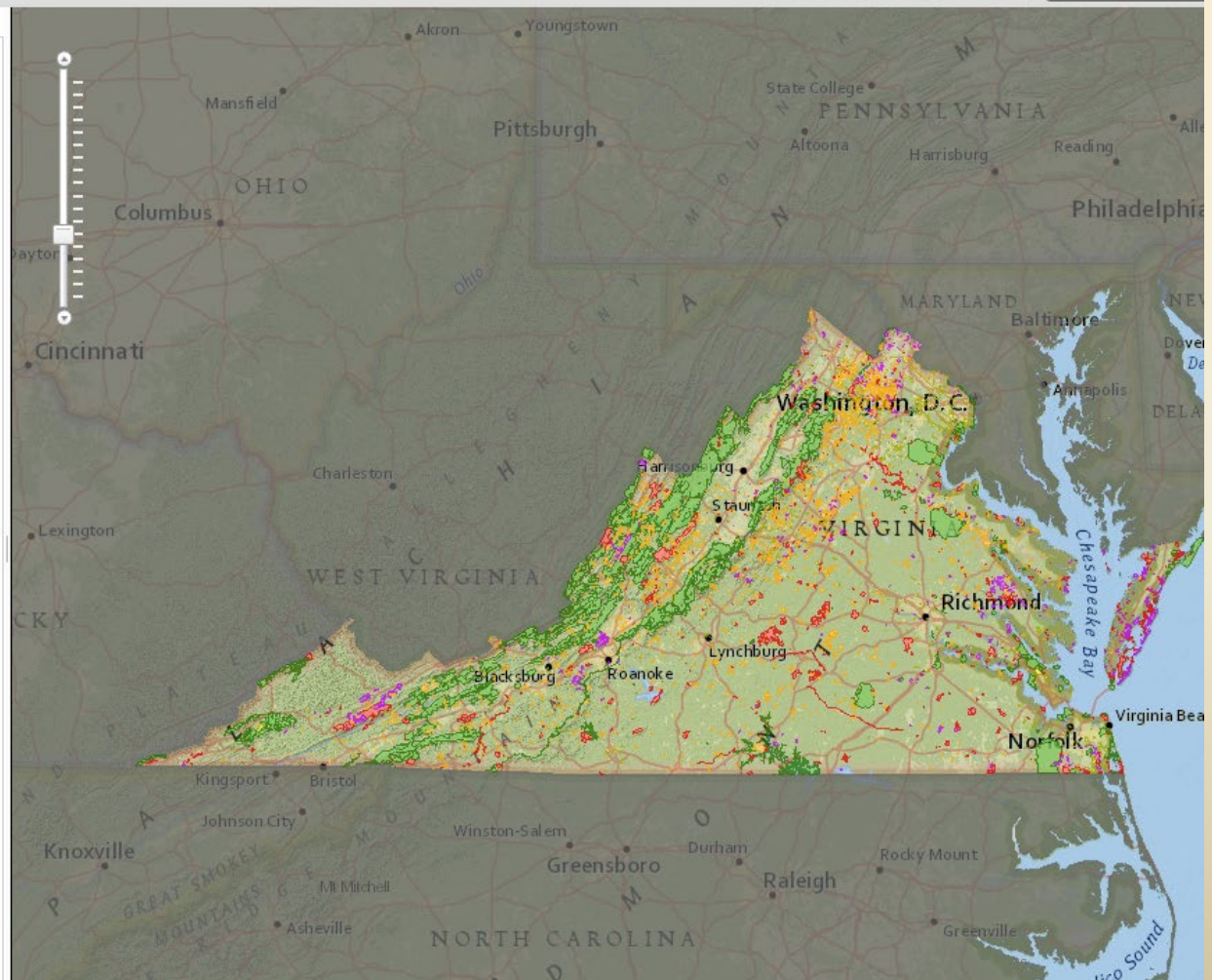
▼ Reference Layers

- ☐ 24K Grid
- ☐ National Wetlands Inventory
- ☐ Scenic Rivers
- ☐ Streams (NHD)
- ☐ Trails
- ☐ USGS Placenames
- ☐ VDOT Roads

▼ Boundaries

- ☐ Counties
- ☐ Physiographic Provinces
- ☐ Planning Districts
- ☐ Subwatersheds (12 digit USGS)
- ☐ Watersheds (8 digit USGS, subbasin)
- ☒ Virginia Boundary

▼ Basemap



VLCF Natural Areas & Biodiversity Conservation

HARVEST  FIELD

Baptist Church

**ALMOST SAVED
IS
TOTALLY LOST**



Questions?

Contact us !

(919) 748-0225 (c)

Rob.Evans@dcr.virginia.gov

